



# ACCESSORY CATALOG 2019





# GEM® PASSENGER VEHICLES

Transport people around campuses, facilities or neighborhoods in distinctive comfort. The GEM's spacious interior, intuitive ergonomics and open-air design make getting in and out easy. All forward-facing seats and quiet operation increase safety and promote connectivity and conversation among passengers.

## THE PERFECT VEHICLE FOR:

- Student and Guest Transportation
- Valet and Customer Service
- Neighborhoods
- Police and Security Control
- Site and Campus Tours
- Families



Aluminum Wheels - Page 17



L-Box - Page 25



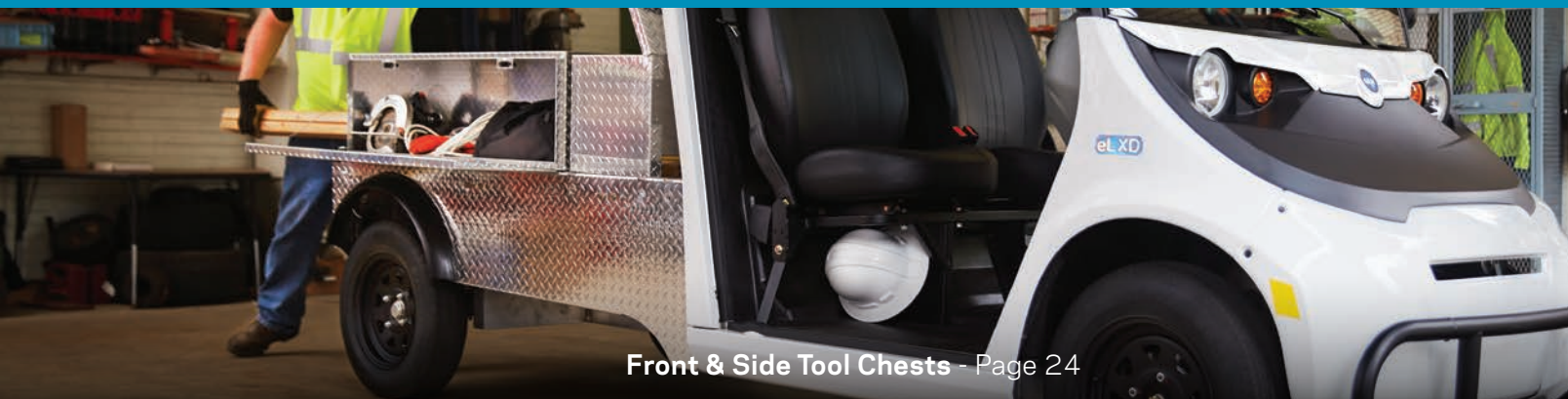
Doors - Pages 14-15

# GEM® UTILITY VEHICLES

With 1,400 lbs. of payload, count on GEM to get the job done efficiently, economically and sustainably—with zero emissions and lower operating costs than a gas-powered van or truck. Choose from hundreds of options and accessories to create the customized vehicle you need to maximize productivity, indoors or out.

## THE PERFECT VEHICLE FOR:

- Groundskeeping
- Facility Management
- Indoor Warehouse
- Housekeeping
- Hospitality
- Emergency Service



Front & Side Tool Chests - Page 24



Boxside - Page 24



Ramped Tailgate - Page 27



## THE RIGHT SOLUTION

---

When it comes to moving people and cargo with ease and efficiency, the vehicle you choose matters. Make the smart choice with the electric GEM®. Polaris® engineered for a premium ride and long-lasting durability, the GEM has more built-in comfort and street-legal safety features than a golf cart, and it's more maneuverable, cost-efficient and sustainable than a van or truck. It offers a more spacious interior with the same compact footprint and quiet, electric power for low-cost, low-maintenance operation.

GEM can be customized to your needs—so you can drive, shuttle, haul and work with confidence that you've chosen a vehicle built for what you do. Drive one today and discover why GEM is **the smarter way to move.™**



# GENUINE ENGINEERED ACCESSORIES



## TABLE OF CONTENTS

<b>POWER &amp; CHARGING</b>	<b>6-9</b>
<b>CAB ACCESSORIES</b>	<b>10-13</b>
<b>DOORS</b>	<b>14-15</b>
<b>WINDOWS</b>	<b>16</b>
<b>WHEELS</b>	<b>17</b>
<b>BUMPERS &amp; WINCHES</b>	<b>18-19</b>
<b>LIGHTS &amp; CAMERAS</b>	<b>20-21</b>
<b>PASSENGER CARRIERS</b>	<b>22-23</b>
<b>UTILITY CARRIERS</b>	<b>24-27</b>

*\*Unless otherwise noted, accessories in this catalog fit 2016 through current models.*

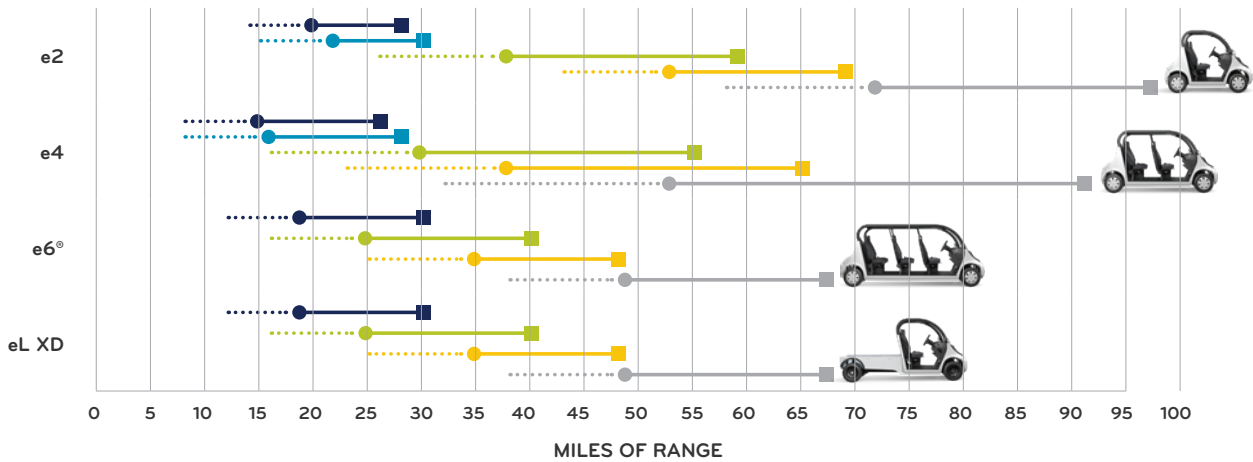


## SMART POWER TO MOVE YOU

Whether you travel just a few miles or drive all day, Polaris® GEM® offers versatile battery and charging options to fit your range requirements and ensure your GEM will always be ready to move when you need it.

### CHOOSE THE BATTERY RIGHT FOR YOU

FLOODED LEAD ACID	MAINTENANCE FREE	DISTANCE MAINTENANCE FREE	LITHIUM-ION 8.9 KWH	LITHIUM-ION 12.4 KWH
Value battery requires regular maintenance	Leak-free, spill-proof design never needs refilling	For increased distance, especially in hilly terrain	Lightweight and hard-working for maximum range and 2-3X more battery life	Maximum range for shuttle and other high-demand applications



● Range on all Polaris electric vehicles will vary depending on temperature, grade, payload and driving style. Average range value includes testing at 25 mph with 332 lbs of cargo and a stop/start every 1,000 ft on a flat grade.  
 ■ NEV values attained via testing in accordance with NEV America requirements with continuous use on a horizontal grade.

### Individual battery information provided below.

Be sure to check for configuration needs if replacing an entire pack, as well as any other requirements.

MAKE	PART #	FITMENT	DESCRIPTION
12V Flooded Lead Acid	4014126	e2, e4	Value battery that comes standard with the vehicles. Requires regular maintenance.
6V Flooded Lead Acid	4015531 4014425	e6, eL XD	Value battery that comes standard with the vehicles. Requires regular maintenance.
Maintenance Free 12V AGM Battery	4015462	e2, e4	Maintenance free battery that never needs filling (leak-free, spill-proof)
Distance Maintenance Free 6V AGM Battery	4015463 4015041	e2, e4, e6, eL XD	Extended range maintenance free battery that never needs filling (leak-free, spill-proof)

# CHOOSE THE SMARTEST FIT FOR YOU:

## MAINTENANCE

- The Flooded Lead Acid will require monthly watering maintenance
- AGM batteries only require you to maintain a charge level of at least 20% and check connections monthly
- Lithium-Ion require **no maintenance**

## LONG TERM BATTERY LIFE

Long term battery life is determined by the amount of times you plug your battery in to charge

- Lithium-Ion batteries have more charge cycles for a longer life span
- Batteries with more range require less frequent charging. This allows for a longer life span

## CHARGE TECHNIQUES

Standard/Overnight Charging

- Speed without fast charger is overnight (8 hour) charge time. *See page 10 for fast charger information*
- Flooded and Maintenance Free batteries charge speed is reduced for the final 20%. Lithium-Ion maintain their speed

Opportunity Charging = plugging in at any battery level

- If this is a priority Lithium-Ion is the best choice, it can reduce battery life for other battery options

## LITHIUM-ION BENEFITS

**Maximum Range + 2-3 x longer Battery Life + Lighter Weight + Better Acceleration  
+ Easy Charging + No Regular Maintenance**

### EASY CHARGING:

- Flexible charge duration
- Chargeable at any battery level  
*(best for opportunity charging)*
- High functioning in cold weather
- **PLUS** - No regular maintenance required!

MAKE	PART #	FITMENT	DESCRIPTION
8.9 kWh Lithium-Ion Battery Pack - 44V	4017366	e2, e4, e6®, eL XD	44V Lithium-Ion battery pack - part of 8.9 kWh system providing extended range and longer life
12.4 kWh Lithium-Ion Battery Pack - 30V	4017365	e2, e4, e6, eL XD	30V Lithium-Ion battery pack - part of 12.4 kWh system providing extended range and longer life
12.4 kWh Lithium-Ion Battery Pack - 15V	4017364	e2, e4, e6, eL XD	15V Lithium-Ion battery pack - part of 12.4 kWh system providing extended range and longer life
12V Battery for use with Lithium-Ion options	4014770	e2, e4, e6, eL XD	12V battery for use with Lithium-Ion battery system to drive BMC; <b>REQUIRED</b> for both Lithium-Ion offerings
Lithium-Ion Battery Upfit Kit	2881852	e2, e4, e6, eL XD	Kit to upfit GEM® battery system to Lithium-Ion package (same kit for upfit to 8.9 or 12.4 system); <b>REQUIRED</b> for both Lithium-Ion offerings



# POWER & CHARGING

## LOOKING TO UPGRADE TO FAST CHARGER?

Three components are required to get the most out of your fast charging abilities:

**1)** the fast charger, **2)** the station charger and **3)** a 240V outlet.



### FAST CHARGER

**PART #:** 4018094 - 3kW  
**FITMENT:** e2, e4, e6®, eL XD

Charge your GEM® at accelerated speeds with a fast charger. Ordering a quantity of one 3kW charger will charge up to 3x faster and ordering a quantity of two will give you charging up to 6x faster.

These accelerated speeds are optimized when used with Lithium-Ion or Distance AGM batteries and a 240 V outlet. For 240V outlet, check city infrastructure for public options or look into at home installation.

This charger requires one of the station chargers to plug into charger receptacle.

Required, sold separately: Charger Mounting Kit (PN 2881835)

CHARGER FITMENT	3kW	6kW
Flooded	No	No
Maintenance Free	Yes	No
Distance Maintenance Free	Yes	No
Lithium-Ion 8.9 kWh	Yes	Yes
Lithium-Ion 12.4 kWh	Yes	Yes



### J1772 3kW/6kW CHARGER MOUNTING KIT

**PART #:** 2881853  
**FITMENT:** e2, e4, e6, eL XD

This kit is required to install the fast charger options onto the vehicle



### ENHANCED CHARGE CORD

**PART #:** 2883899  
**FITMENT:** e2, e4, e6, eL XD, eM®1400 LSV

The upgraded charge cord plugs into a standard wall outlet but now includes an enhanced door seal that reduces the risk of water incursion and corrosion. We also added a positive, full-insertion mechanism that includes an audible click and visual confirmation that the plug is fully inserted. Furthermore, a more robust electrical connection reduces the risk of arcing.

(Note: This charge cord not compatible with J1772 charge cord. Standard on select Model Year 18 vehicles, standard on Model Year 19 to current.)





## SOLAR

**PART #:** 2881506  
**FITMENT:** e4

**PART #:** 2881507  
**FITMENT:** e6®, eL XD (with 2881663)

Extend your time between charges and battery life with a renewable source of energy - the sun!

The solar panel is lightweight, non-glass high efficiency Mono Crystalline Solar which is hail and impact resistant

Specifically designed and programmed to work with and match the Polaris® 48V battery set systems

Does not work with: Lithium-Ion



## CHARGE PORT DOOR

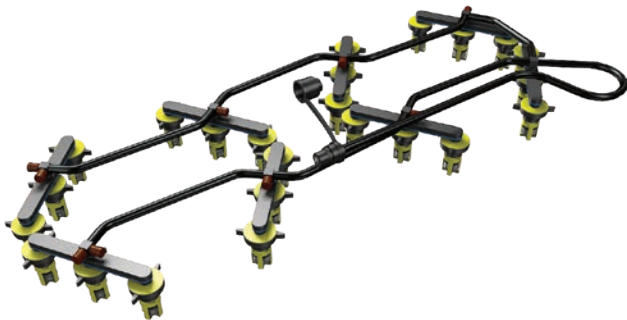
**WHITE PART #:** 2882582-599  
**FITMENT:** e2, e4, e6, eL XD

**BLACK PART #:** 2882582-666  
**FITMENT:** e2, e4, e6, eL XD

**RED PART #:** 2882582-520  
**FITMENT:** e2, e4, e6, eL XD (2016-2018 MODELS ONLY)

**BLUE PART #:** 2882582-598  
**FITMENT:** e2, e4, e6, eL XD (2016-2018 MODELS ONLY)

Improved port door now has curved edges for easier grip, and integrated hinges for sturdier door when charging. Works as a direct replacement for 2016 charge port doors.



## BATTERY WATERING KITS

**PART #:** 2881635 - 12V  
**FITMENT:** e2, e4

**PART #:** 2881636 - 6V  
**FITMENT:** e6, eL XD

Filler works by replacing the battery's existing vent caps with valves that are interconnected with tubing, allowing the user to fill all cells of the battery from a single remote location

Each valve independently shuts off water flow to the cell when the proper electrolyte level is reached, allowing the batteries to be filled perfectly each time



## BATTERY FILLER SYSTEM FOR GEM® eM®1400 LSV

**PART #:** 2880201  
**FITMENT:** eM 1400 LSV

Filler works by replacing the battery's existing vent caps with valves that are interconnected with tubing, allowing the user to fill all cells of the battery from a single remote location

Each valve independently shuts off water flow to the cell when the proper electrolyte level is reached, allowing the batteries to be filled perfectly every time



## GRAY TWO-TONE SEATS

**PART #:** 2686216-317  
**FITMENT:** e2, e4, e6®, eL XD

Enhance your GEM®'s style with two-toned seats



## UNDERSEAT STORAGE

**PART #:** 2882505  
**FITMENT:** e2, e4, e6, eL XD

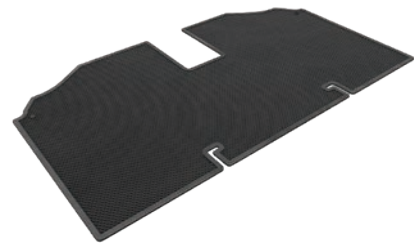
The underseat storage allows for minimal rear seat foot room impact, has 3 compartment design with a large central storage space and side load storage. It mounts to the seat via velcro, keeping it securely in place



## UNDER SEAT STORAGE TUB

**PART #:** 2880202  
**FITMENT:** eM® 1400 LSV

Gain extra storage with this storage tub  
Fits underneath the seat



## RUBBER FLOOR MATS

**PART #:** 5416119 - Front  
**FITMENT:** e2, e4, e6, eL XD

**PART #:** 5416120 - Rear  
**FITMENT:** e4, e6

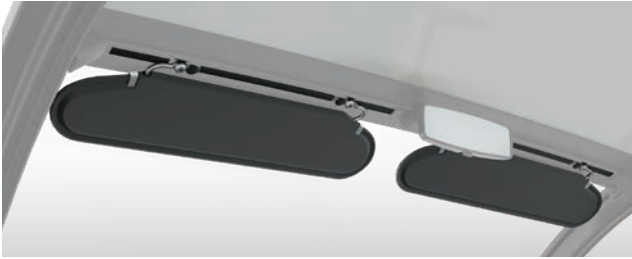
Protects your floors from scuff marks,  
and provides added traction



## CENTER CONSOLE WITH CUPHOLDERS

**PART #:** 2881674  
**FITMENT:** e2, e4, e6, eL XD

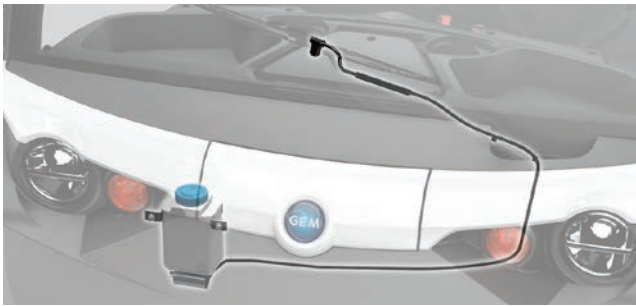
Add additional cupholders between the seats with this convenient center console



## VISOR

**PART #:** 2884227  
**FITMENT:** e2, e4, e6®, eL XD

Enhance comfort and safety by blocking the sun and increasing visibility



## WINDSHIELD WASHER

**PART #:** 2881863  
**FITMENT:** e2, e4, e6, eL XD

Keep your windshield free of dirt and debris



## ELECTRONIC POWER STEERING (EPS)

**PART #:** 2882508  
**FITMENT:** e2, e4, e6, eL XD

Electric Power Steering allows for a more comfortable and effortless driving experience.

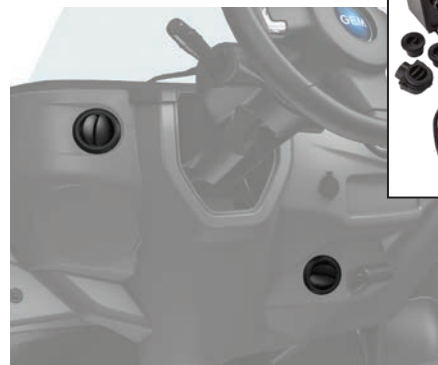


## WIPER KIT

**PART #:** 2880884  
**FITMENT:** eM® 1400 LSV

Clear rain and debris from your windshield with the flick of a switch

Easy installation, includes all hardware, wiring and switches



## HEATER KIT

**PART #:** 2880880  
**FITMENT:** eM 1400 LSV

**PART #:** 2882717  
**FITMENT:** e2, e4, e6, eL XD

Provides fan and heat source to raise cab temperatures in electric vehicles

Easy installation, includes heater, fan, mounting hardware, blower ducts and wiring



## SIDE MIRROR KITS

**PART #:** 2882581  
**FITMENT:** e2, e4, e6®, eL XD

**PART #:** 2881001 - Driver  
**FITMENT:** eM® 1400 LSV

**PART #:** 2881002 - Passenger  
**FITMENT:** eM 1400 LSV

Large, fully-adjustable mirror provides good visibility to the sides and rear of the vehicle, especially when in heavy traffic or tight parking areas

Easy installation

Required, sold separately: Mounting Kit (PN 2881012) when used on any vehicle with Poly Doors (PN 2879111)

\*Direct replacement for 2016 standard factory side mirror



## REAR VIEW HARDWARE KIT

**PART #:** 2882580  
**FITMENT:** e2, e4, e6, eL XD

This kit allows you to install a rearview mirror on MY16 GEM®s to enhance your awareness of vehicles and obstacle around and behind your GEM. It mounts securely, is adjustable, and it provides an excellent view of traffic or obstacles behind or alongside your GEM

Required, sold separately: Mounting Kit (PN 2881011)



## LIGHTNING AUDIO STEREO

**PART #:** 2882314  
**FITMENT:** e2, e4, e6, eL XD

The Lightning Audio LA-1500BT Stereo features large 6.5" Rockford Fosgate speakers with a built-in amplifier, AM/FM radio, Bluetooth wireless technology, app control for smartphones, USB port and front auxiliary input

Face plate is detachable for added security





## SPEED KEY

**PART #:** 2883054  
**FITMENT:** e2, e4, e6®, eL XD

GEM® owner controls the performance available to individual drivers with this speed key. The kit is mounted under the hood to govern vehicle speed between either 10 mph or 15 mph and 25 mph. 25 mph is the speed that an LSV used on road must legally travel. Dealer installation and re-flash required



## HORN KIT

**PART #:** 2875048  
**FITMENT:** eM® 1400 LSV

Installs in the console area  
Connects to the vehicle's battery power supply



## COVERS

**PART #:** 2687218  
**FITMENT:** e2

**PART #:** 2687219  
**FITMENT:** e4

**PART #:** 2687220  
**FITMENT:** e6

**PART #:** 2687221  
**FITMENT:** eL XD

Protects your vehicle in short or long term storage  
Water-resistant, washable, and designed not to scratch the finish of your vehicle  
Features a cinch strap to ensure a tight fit



## REVERSE WARNING KIT

**PART #:** 2876228  
**FITMENT:** eM 1400 LSV

While in reverse, a beep will sound alerting those around you that you are backing up



## HOW TO ORDER GEM<sup>®</sup> DOORS

### A STEP-BY-STEP GUIDE FOR ORDERING DOORS FOR DEALER INSTALLATION

See your local dealer for full details and ordering information.

#### STEP 1

##### CHOOSE YOUR DOOR MOUNTING KIT.

This kit includes the framing to which the doors mount. The kits vary by vehicle model. All door options require a door mounting kit.

PART #	KIT	MODEL
2881857	Door Mounting Kit	e2, eL XD
2881858	Door Mounting Kit	e4
2881859	Door Mounting Kit	e6 <sup>®</sup>

#### STEP 2

##### CHOOSE YOUR FILLER COLOR.

This part includes the filler panels in the front and rear of the vehicle to close the gaps between the frame and door. The kits need to be ordered to match vehicle model AND door color. This kit is required for mounting all door options.

PART #	KIT	MODEL
2881860-666	Black Filler Kit	e2, e4, e6, eL XD
2881860-599	White Filler Kit	e2, e4, e6, eL XD

#### STEP 3

##### CHOOSE YOUR DOOR TYPE AND COLOR.

Doors are ordered in quantities of one. Ensure you order the same color, door type and appropriate quantities of each door needed.

A Rear Window (PN 5452161) is recommended to complete the cab enclosure if one wasn't installed at the factory as an option upgrade.

\*Adhesive Kit (PN 2882097) required, sold separately

See next page for door selection and pricing



### FRONT FULL HARD DOOR

**FITMENT:** e2, e4, e6®, eL XD

COLOR	PART #
Driver's Side Black	2635825-666
Driver's Side White	2635825-599
Passenger Side Black	2635826-666
Passenger Side White	2635826-599



### MIDDLE/REAR FULL HARD DOOR

**FITMENT:** e4, e6

COLOR	PART #
Driver's Side Black	2635827-666
Driver's Side White	2635827-599
Passenger Side Black	2635828-666
Passenger Side White	2635828-599

*\*Red and Blue front, middle and rear doors available. Contact your dealer for more information.*



### LOCK & RIDE® POLY DOORS

**PART #:** 2879111  
**FITMENT:** eM® 1400LSV

- Provides protection and comfort
- Windows can be opened, and pivoted as desired for airflow and exterior access
- Strong, durable structural web injection-molded shell
- Profile tubing and plastic design create sealed perimeter
- Lightweight, strong and durable polyethylene construction
- Textured finish on polyethylene matches vehicle finish
- Door is backed with sound-absorbing insulation material



### DOOR SEALS

**PART #:** 2207257  
**FITMENT:** e2, eL XD

**PART #:** 2207267  
**FITMENT:** e4

**PART #:** 2207268  
**FITMENT:** e6

Get the ultimate weather protection. With the L-shaped cab frame design, the doors mount flush and include newly improved door seals that improve water intrusion. For nice weather, these doors can be easily removed in just seconds. If ordering a new vehicle these seals come standard. The seals are meant to upfit older models. See dealer for details.



# WINDOWS



## LOCK & RIDE® POLY ROOF

**PART #:** 2879109  
**FITMENT:** eM® 1400LSV

- Installs quickly and easily, without tools, using Lock & Ride technology and provides a sealed fit
- Provides outstanding overhead protection and shade to keep riders protected and comfortable
- Lightweight, strong and durable polyethylene construction
- Textured finish on polyethylene matches vehicle finish



## REAR WINDOW

**PART #:** 5452161  
**FITMENT:** e2, e4, e6®, eL XD

Protect the interior from sun, wind and rain



## POLY REAR PANEL

**PART #:** 2879950  
**FITMENT:** eM1400LSV

Installs quickly and easily, without tools, using Lock & Ride technology



# WHEELS



## ALUMINUM WHEELS (14 X 165)

**PART #:** 1522553  
**FITMENT:** e2, e4, e6®, eL XD

Add styling to your GEM® with an aluminum rim  
Tires offer a smooth ride  
Rated for on-road driving  
Sold individually: order quantity of 4 for complete set



## PLASTIC HUBS

**PART #:** 1522584  
**FITMENT:** e2, e4, e6, eL XD

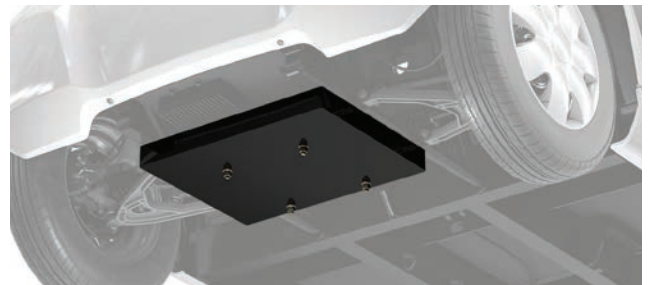
Add a bit of style and curb appeal to your GEM while still keeping your costs down  
Not compatible with aluminum rims, sold individually



## FENDER FLARES

**PART #:** 2881673  
**FITMENT:** eL XD

Help protect your vehicle's side panels.  
For rear wheels only



## BALLAST PLATE

**PART #:** 2882298  
**FITMENT:** e2, e4, e6, eL XD

Adds weight to the front of GEM improving its traction on steep hills  
Only available on 2016-2017 models





# BUMPERS & WINCHES



## FRONT RUGGED BUMPER

**PART #:** 2881627  
**FITMENT:** e2, e4, e6®, eL XD

The rugged bumper adds extra front protection for heavy-duty work applications  
Powder-coated steel  
Does not work with: Front Chrome Bumper



## PREMIUM FRONT BUMPER

**PART #:** 2881629  
**FITMENT:** e2, e4, e6, eL XD

Enhance the styling of your GEM® with a polished finish  
Protect your vehicle from scratches and dings  
Does not work with: Front Rugged Bumper



## REAR RUGGED BUMPER WITH HITCH

**PART #:** 2882458  
**FITMENT:** e2, e4, e6

Powder coated steel  
Protect your vehicle from scratches and dings  
1 ¼ inch receiver  
Does not work with: Rear Chrome Bumper



## PREMIUM REAR BUMPER

**PART #:** 2881630  
**FITMENT:** e2, e4, e6, eL XD

Enhance the styling of your GEM with a polished finish  
Protect your vehicle from scratches and dings  
Does not work with: Rear Rugged Bumper



## REAR RUGGED BUMPER WITH HITCH

**PART #:** 2881628  
**FITMENT:** eL XD

Powder coated steel  
Protect your vehicle from scratches and dings  
2 inch receiver  
Does not work with: Rear Chrome Bumper

## POLARIS® 3500 LB. INTEGRATED WINCH

PART #: 2881669  
FITMENT: eM® 1400 LSV



3,500 lbs. rated pull

50 feet of 7/32 inch high-strength steel cable

Sealed motor and gear train to ensure reliable operation in extreme conditions






Includes: mini-rocker corded switch, roller fairlead, hook and strap and all mounting hardware and installation wiring

Required, sold separately: EV Winch Kit (PN 2879031), 30A Batteries (PN 4010630)





# LIGHTS & CAMERAS

LIGHTS	PART #	FITMENT	DESCRIPTION	
	Amber Security Light Bar	2412057	eM® 1400 LSV	Easy to install light design by Code 3 Rotating light
	Red Security Light Bar	2412059	eM 1400 LSV	Easy to install light design by Code 3 Rotating light
	Amber LED Light Bar	2412060	eM 1400 LSV	Clear lens with amber colored LEDs Low profile for a stealth look Draws 50-75% less amps than a standard mechanical security light bar
	Blue/Red LED Light Bar	2412063	eM 1400 LSV	Clear lens with blue/red LEDs Low profile for a stealth look Draws 50-75% less amps than a standard mechanical security light bar
	LED Light Bar	2881803	e2, e4, e6®, eL XD	Great for industrial applications Amber colored roof mounted bar light adds visibility for safer operation Does not work with: Beacon Light





## PREMIUM LED HEADLIGHTS

**PART #:** 2413644  
**FITMENT:** e2, e4, e6®, eL XD

Upgrade to premium and get daytime running lights to make your GEM® more visible to others along with additional LED bulbs for increased visibility at night

Qty. 1



## REVERSE LIGHT KIT

**PART #:** 2413085  
**FITMENT:** e2, e4, e6, eL XD

Reverse lights give added safety so those around you know when your backing up



## BEACON LIGHT

**PART #:** 2880912  
**FITMENT:** eM® 1400LSV

Great for industrial applications

Amber colored beacon light adds visibility to the vehicle for safe operation and can be used with or without a poly roof

All wiring and hardware is included



## BACK-UP CAMERA

**PART #:** 2883250  
**FITMENT:** e2, e4, e6

New back-up camera is one more feature to help you navigate the urban environment while keeping your eyes where they need to be. The viewing screen is conveniently located on the rearview mirror so your eyes are always on the road. The camera is mounted on the vehicle's rear panel and is activated when the vehicle is in reverse increasing pedestrian safety and enhancing vehicle maneuverability in reverse

Meets LSV Standard FMVSS 111

\*Standard on select 2018 to current model years



## LED BEACON LIGHT

**PART #:** 2881802  
**FITMENT:** e2, e4, e6, eL XD

Great for industrial applications

Amber colored roof mounted beacon light adds visibility for safer operation

Does not work with: Light Bar



## BACK-UP CAMERA

**PART #:** 2883251  
**FITMENT:** eL XD

Meets LSV Standard FMVSS 111

\*Standard on select 2018 to current model years



# PASSENGER CARRIERS



## S-BED

**PART #:** 2882431  
**FITMENT:** e2, e4, e6®

Easily convert the back of your GEM® to carry more cargo. This bed allows for up to 330 pounds of payload when installed. It is 32.5x42.5 inches, made of space age material and has 4 D-rings to help secure your cargo



## S-BED SOLID SIDES

**PART #:** 2882432  
**FITMENT:** e2, e4, e6

Durable support for hauling and transporting larger, bulky loads. Solid sides help eliminate cargo from falling out  
S-box sides are made of aluminum with spring loaded latch for the hinged tailgate to make it easy to load and unload  
Required, sold separately: S-Bed (PN 2882431)  
Does not work with: Trunk Back and Linkback



## S-BOX

**PART #:** 2882713  
**FITMENT:** e2, e4, e6

Lockable, weather-tight, enclosed cargo carrier is perfect for transporting food and cargo, supplies or tools

Features hinged supported door and high-quality lockable door latch

Large, 23 cu ft storage capacity

Dimensions 28" x 38" x 38"

Does not work with trunkback or linkback.  
Requires S-bed and Solid Sides.



## TIE DOWNS

**PART #:** 2881781  
**FITMENT:** e2, e4, e6

Help secure your cargo with these easy to install tie downs  
Required, sold separately: S-Bed (PN 5262121)  
Does not work with: Trunk Back and Linkback



## LINKSBACK

**PART #:** 2881634  
**FITMENT:** e2, e4, e6®

Carries two golf bags  
Does not work with: S-Bed, S-Bed Solid Sides, Trunkback,  
Rear Rugged Bumper and Rear Chrome Bumper



## TRUNK BACK

**PART #:** 2881504  
**FITMENT:** e2, e4, e6

Lockable and removable design that is easy to install and remove  
Perfect for groceries or other small cargo  
Measures 33" x 16" x 15"  
100 lb. carrying capacity  
Does not work with: S-Bed, Solid Sides, Linksback  
and Rear Cargo Net



## REAR CARGO NET

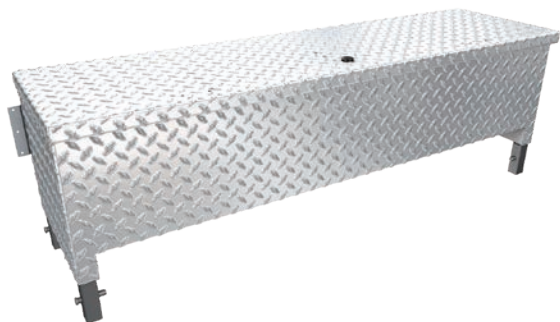
**PART #:** 2881915  
**FITMENT:** e2, e4, e6

Helps secure your load  
Designed to be used with passenger carriers, such as  
S-bed and S-bed Solid Sides  
Requires Tie Downs (PN 2881781)





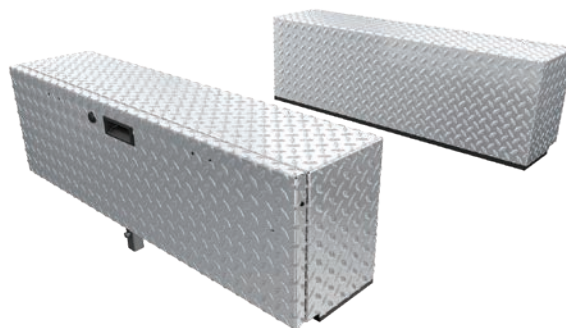
# UTILITY CARRIERS



## FRONT TOOL CHEST

**PART #:** 2881632  
**FITMENT:** eL XD, eM® 1400 LSV

Keep tools and equipment in a convenient location  
Lockable for added security  
Measures 47.25" x 20" x 19.5" and has a 200 lb. carrying capacity  
Does not work with: Front Panel



## SIDE TOOL CHEST

**PART #:** 2881633  
**FITMENT:** eL XD

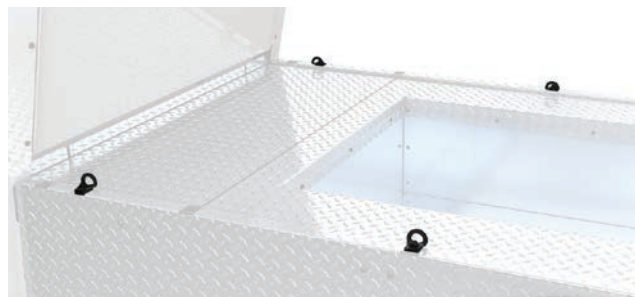
Fits the length of the flat bed and allows an open space in between for items that won't fit inside the boxes  
Lockable for added security  
Does not work with: Boxside and L-Box



## BOXSIDE

**PART #:** 2883090  
**FITMENT:** eL XD

Durable support for hauling and transporting larger, bulky loads  
Easy to remove sides for oversized loads  
Solid sides help eliminate cargo from falling out  
Hinged for easy access  
Required, sold separately: Front Panel (PN 2881778), or Front Tool Chest (PN 2881632) with Boxside Tool Chest Adapter (PN 2881780) for mounting  
Does not work with: L-Box



## eL XD BED TIE DOWNS

**PART #:** 2881722  
**FITMENT:** eL XD, eM 1400 LSV

Help secure your cargo with these easy to install stainless tie down brackets

## BOXSIDE TOOL CHEST ADAPTER

**PART #:** 2881780  
**FITMENT:** eL XD

Used to adapt the front tool chest to mount solid sides

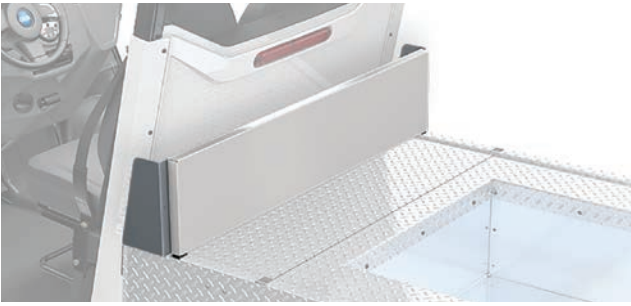


## RECESSED BED COVER

**PART #:** 2881681  
**FITMENT:** eL XD

These panels create a flat bed on the eL XD for hauling





## FRONT PANEL

**PART #: 2881778**  
**FITMENT: eL XD**

Used with solid sides without Front Tool Chest  
Durable support for hauling and transporting larger, bulky loads  
Protects cabin from loads in box  
Required, sold separately: Boxsides (PN 2881777)  
Does not work with: L-Box and Side Tool Chest



## FOLD DOWN STAKEBACK

**PART #: 2881682**  
**FITMENT: eL XD**

Durable support for hauling and transporting larger, bulky loads  
Easy to remove sides for oversized loads



## L-BOX

**PART #: 2882712**  
**FITMENT: eL XD**

Features a 44 inch high cab canopy box, lined rear door and full length side door for easy access to cargo  
Made of aluminum with an enamel white finish  
Does not work with: Boxside, Ladder Rack, Front Tool Chest, Side Tool Chest and Front Panel



## LADDER RACK ACCESSORY FOR L-BOX

**PART #: 2883089**  
**FITMENT: eL XD**

Commercial truck inspired accessory to mount on L-Box, ideal for transporting long items like ladders, pipe, lumber or building and maintenance supplies  
Rated for up to 75 lbs of cargo  
Required, sold separately: L-Box (PN 2882712)



# UTILITY CARRIERS



## LADDER RACK

**PART #:** 2881663  
**FITMENT:** eL XD

Ideal for transporting long items such as ladders, pipe, lumber or other building and maintenance supplies

Rated for up to 75 lbs. of cargo

Can be installed with Bed Sides or Tool Chests

Does not work with: L-Box



## MANUAL BOX LIFT

**PART #:** 2880418  
**FITMENT:** eM® 1400 LSV

Manual latch to release bed tilt and hydraulic shock to hold bed in dump position

All mounts are integrated into the chassis for easy installation

Includes all hardware



## 60 GALLON BOOMLESS UTILITY SPRAYER

**PART #:** 2879799  
**FITMENT:** eM 1400 LSV

Features a 60-gallon corrosion-resistant polyethylene tank, 12-volt diaphragm pump, and a pressure gauge with adjustable spray pressure

Delivers fluids at a rate of up to 3.8 gpm with a 45 psi maximum

Deluxe pistol grip handgun with an adjustable nozzle and 25 foot hose

Spray gun horizontal throw is 35 feet, with a maximum vertical throw of 26 feet

Boomless nozzles can deliver across a full 30 foot spray coverage area

Material: Polyethylene tank

Required, sold separately: Bed Sides (PN 2880070)



## ELECTRIC BOX LIFT

**PART #:** 2880145  
**FITMENT:** eM 1400 LSV

Heavy-duty actuator raises/lowers cargo box

All mounts are integrated into the chassis for easy installation

Dump dirt, sand or mulch with the flip of a switch

Includes all hardware and a dash-mounted switch



## LOCK & RIDE® CHAINSAW MOUNT

**PART #:** 2879354  
**FITMENT:** eM 1400 LSV

Installs quickly and easily, without tools, using Lock & Ride technology

Can be secured to the outside of the bed wall, so your chainsaw is within reach at all times allowing you to maximize the bed space for other cargo

Required, sold separately: Bed Sides (PN 2880070)



## LOCK & RIDE® CARGO BOX

**PART #:** 2877033  
**FITMENT:** eM® 1400LSV

Keeps your tools safe and secure  
Installs quickly and easily, without tools, using Lock & Ride technology  
Oversized hinged lid provides full, easy access to cargo  
Durable Polyethylene Construction  
Required, sold separately: Bed Sides (PN 2880070)



## HINGED TAILGATE

**PART #:** 2881869  
**FITMENT:** eL XD

Hinged tailgate drops down for easy loading/unloading of cargo



## RAMPED TAILGATE

**PART #:** 2881870  
**FITMENT:** eL XD

Roll heavy cargo on and off your GEM®



## REMOVABLE LOCK & WORK™ BED SIDES

**PART #:** 2880070  
**FITMENT:** eM1400LSV

Contain your cargo with solid 12 inch tall sides and a removable rear panel.  
Easily removed and installed using Lock & Work Technology



## LOCK & WORK MAX BOX STANDARD DOOR

**PART #:** 2880144  
**FITMENT:** eM1400LSV

Easily removed and installed using Lock & Work Technology  
Fully enclosed storage box keeps cargo and gear secure and dry  
Dimensions 54" x 42" x 42"  
Cannot be used with: Poly Rear Panel (PN 2579950)



Polaris® LSVs comply with the NHTSA Low Speed Vehicles rules and regulations and can be operated on many streets with posted speed limits of 35 mph or less. Check local laws regarding street use and vehicle equipment requirements. Drivers must be at least 16 years old with a valid driver's license. Driver and passengers should always wear seat belts. Where appropriate for work and riding conditions, helmets and eye protection should also be worn. Never engage in stunt driving, and avoid excessive speeds and sharp turns. Never drink and drive. Range on all Polaris electric vehicles will vary depending on temperature, grade, payload, and driving style. All pricing, specifications, claims, and information contained in this brochure are based on information available at the time of publication. Polaris assumes no responsibility for any inaccuracies, opinions, or omissions in those publications. All pricing, specifications, and descriptions are subject to change without notice, and Polaris assumes no responsibility for changes in pricing or specifications. Unless otherwise noted, all trademarks are the property of Polaris Industries Inc. ©2019 Polaris Industries Inc. Part No. 9931006

[GEMcar.com](http://GEMcar.com)

